

# TOWN & COUNTRY INDUSTRIES

## COLONIAL SHUTTER (HVHZ) - PATENT #8126298

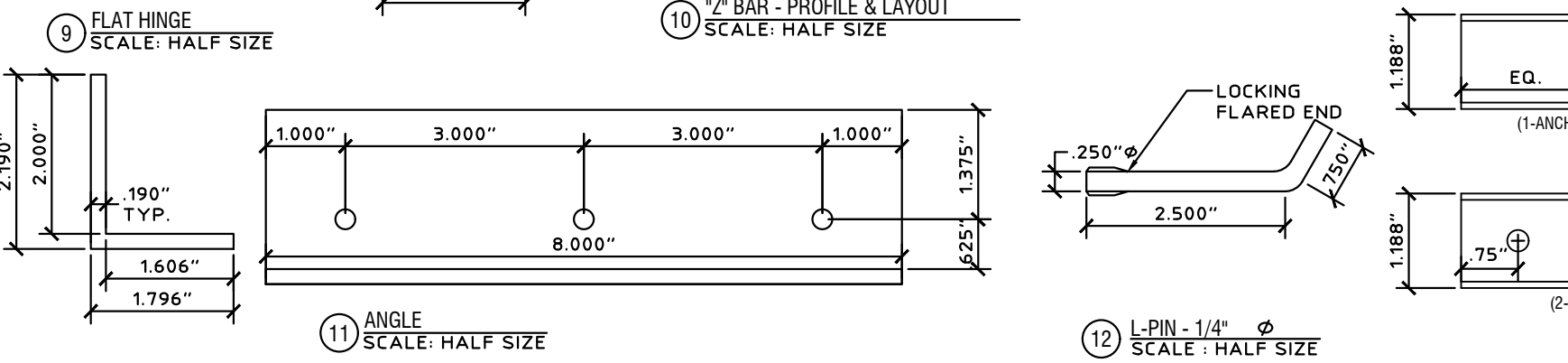
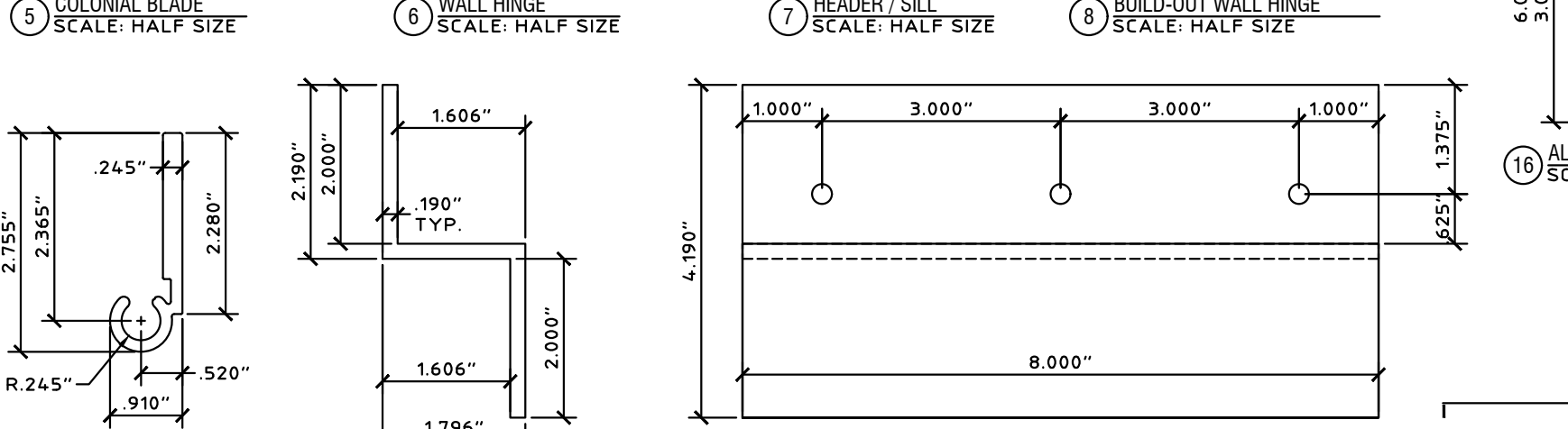
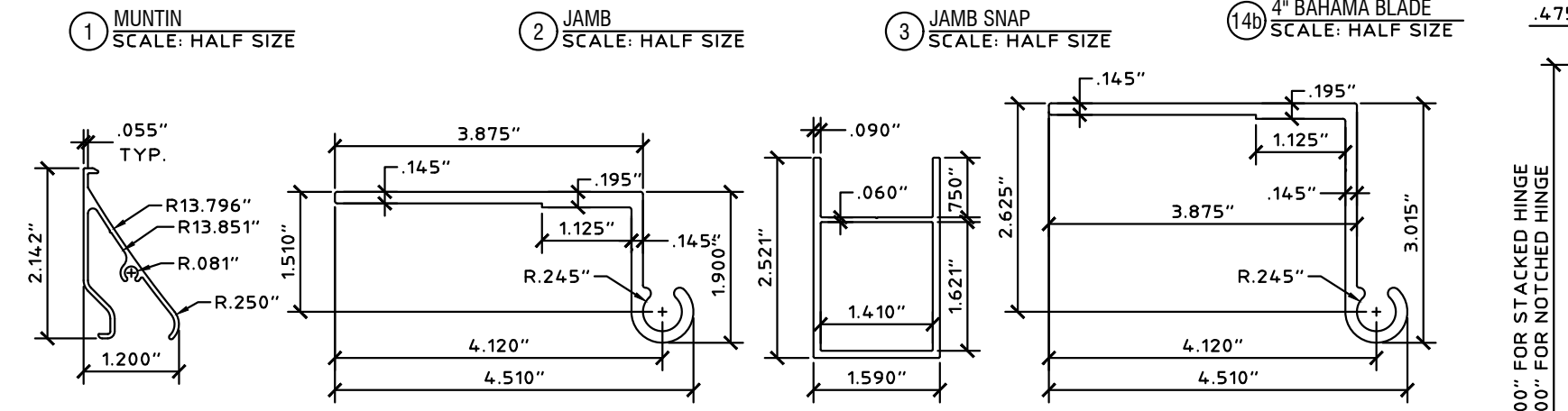
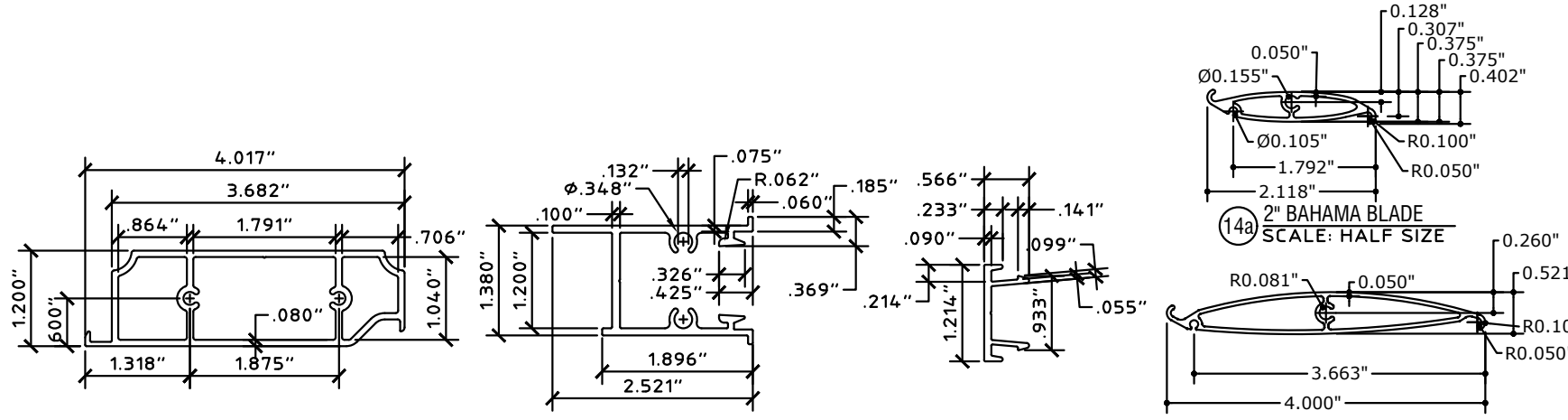
### IMPACT / NON-IMPACT - HVHZ

NON-SITE-SPECIFIC STRUCTURAL PERFORMANCE EVALUATION. A DESIGN PROFESSIONAL SHALL BE RESPONSIBLE FOR CERTIFYING THE APPLICATION OF THIS INFORMATION TO ANY SITE-SPECIFIC LOCATION.

**NOTE REGARDING USE OF THIS DOCUMENT & USE OUTSIDE FLORIDA:**  
 NON-SITE-SPECIFIC STRUCTURAL PERFORMANCE EVALUATION. THIS PRODUCT EVALUATION IS VALID FOR USE IN **FLORIDA ONLY**. USE OF THIS EVALUATION REQUIRES A REVIEW & CERTIFICATION BY A LOCAL DESIGN PROFESSIONAL WHO SHALL BE RESPONSIBLE FOR THE PROPER ADAPTATION OF THIS GENERAL PERFORMANCE EVALUATION TO ANY SITE-SPECIFIC PROJECT. CONTACT THIS OFFICE AT [ENGINEERINGEXPRESS.COM/QUOTE](http://ENGINEERINGEXPRESS.COM/QUOTE) FOR ASSISTANCE WITH YOUR PROJECT-SPECIFIC NEEDS & FOR ADAPTATION & CERTIFICATION OF THIS DOCUMENT OUTSIDE OF FLORIDA.

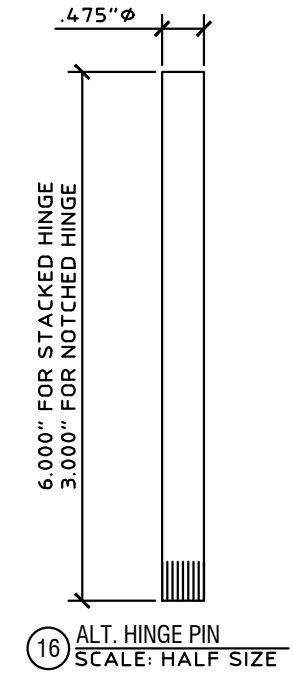
COLBY BENNARDO, PE  
 PE# 95197 CA# 9885

AUGUST 21, 2023

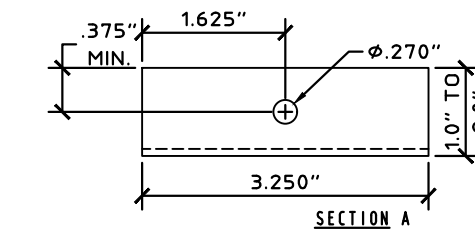


### GENERAL NOTES:

- THESE INSTALLATION INSTRUCTIONS ARE PART OF A PRODUCT APPROVAL EVALUATION AND SHALL ONLY BE USED IN CONJUNCTION WITH THE EVALUATION REPORT SUBMITTED FOR THE SAME PRODUCT APPROVAL.
- THIS SYSTEM HAS BEEN TESTED AND EVALUATED AS A LEVEL D LARGE MISSILE IMPACT PROTECTIVE SYSTEM IN ACCORDANCE WITH THE FLORIDA BUILDING CODE EIGHTH EDITION (2023), FOR USE INSIDE THE HIGH VELOCITY HURRICANE ZONE, AND THE INTERNATIONAL BUILDING CODE (IBC) AND INTERNATIONAL RESIDENTIAL CODE (IRC). SEE EVALUATION FOR MORE INFORMATION.
- POSITIVE AND NEGATIVE DESIGN PRESSURES CALCULATED FOR USE WITH THIS SYSTEM SHALL BE DETERMINED PER SEPARATE ENGINEERING IN ACCORDANCE WITH THE GOVERNING CODE. PRESSURE REQUIREMENTS SHALL BE LESS THAN OR EQUAL TO THE POSITIVE OR NEGATIVE DESIGN PRESSURE CAPACITY VALUES LISTED HEREIN FOR ANY ASSEMBLY AS SHOWN.
- TESTING WAS CONDUCTED IN ACCORDANCE WITH TAS 201/202/203 AND ASTM E1886/E1996/E330. SEE EVALUATION REPORT FOR MORE INFORMATION.
- DESIGN PRESSURES NOTED HEREIN ARE BASED ON MAXIMUM TESTED PRESSURES DIVIDED BY A 1.5 SAFETY FACTOR.
- NO INCREASE IN ALLOWABLE STRESS HAS BEEN USED IN THE DESIGN OF THESE PRODUCTS. WIND LOAD DURATION FACTOR Cd = 1.6 WAS USED FOR WOOD ANCHOR DESIGN.
- DETERMINE THE POSITIVE AND NEGATIVE DESIGN LOADS TO USE WHEN REFERENCING THESE DOCUMENTS IN ACCORDANCE WITH THE GOVERNING CODE AND GOVERNING WIND VELOCITY. FOR WIND LOAD CALCULATIONS IN ACCORDANCE WITH ASCE 7, A DIRECTIONALITY FACTOR OF Kd = 0.85 SHALL BE USED.
- THE SYSTEM DETAILED HEREIN IS GENERIC AND DOES NOT PROVIDE INFORMATION FOR A SPECIFIC SITE.
- PERMIT HOLDER SHALL VERIFY THE ADEQUACY OF THE EXISTING STRUCTURE TO WITHSTAND SUPERIMPOSED LOADS.
- ANCHORS SHALL BE INSTALLED PER MANUFACTURER RECOMMENDATIONS. MINIMUM EMBEDMENT AND EDGE DISTANCE EXCLUDES STUCCO, FOAM, BRICK, AND OTHER WALL FINISHES.
- USE OF THESE APPROVAL DOCUMENTS SHALL COMPLY WITH CHAPTER 61G15-23 OF THE FLORIDA ADMINISTRATIVE CODE.
- THESE APPROVAL DOCUMENTS ARE SUITABLE TO BE APPLIED BY THE CONTRACTOR PROVIDED THE CONTRACTOR DOES NOT DEVIATE FROM THE CONDITIONS DETAILED HEREIN AND THE CONTRACTOR VERIFIES THAT THE EXISTING STRUCTURE DOES NOT DEVIATE IN EITHER FORM OR MATERIAL FROM THE STRUCTURAL SUBSTRATES DETAILED HEREIN.
- ANY MODIFICATIONS OR ADDITIONS TO THESE APPROVAL DOCUMENTS WILL VOID THE APPROVAL DOCUMENTS.
- EACH SHUTTER ASSEMBLY SHALL BE PERMANENTLY LABELED WITH THE SPECIFICATIONS LISTED BY THE FLORIDA DBPR.
- ALL EXTRUSIONS SHOWN SHALL BE 6063-T6 ALUMINUM ALLOY, U.O.N., WITH A MINIMUM Fy OF 25 K.S.I.
- ALL BOLTS AND WASHERS (EXCLUDING INSTALLATION) SHALL BE STAINLESS STEEL WITH A MINIMUM TENSILE STRENGTH OF 60 K.S.I., U.O.N. POP RIVETS SHALL BE 1/4"Ø OR 3/16"Ø 5052 ALUM. ALLOY.
- REFER TO FASTENER MANUFACTURER'S PUBLISHED DATA SHEETS AND RECOMMENDATIONS FOR FASTENER INSTALLATION INSTRUCTIONS.
- MAXIMUM ALLOWABLE DESIGN PRESSURE IN CLOSED POSITION PROVIDING WIND LOAD & IMPACT RESISTANCE = **+69.3/-79.5 PSF** FOR ALL NON-SLIDING PANEL WITH TRACK CONFIGURATIONS. MAXIMUM ALLOWABLE DESIGN PRESSURE IN CLOSED POSITION FOR ALL SLIDING PANEL TRACK CONFIGURATIONS = **+57.2/-66.2 PSF**.
- MAXIMUM ALLOWABLE DESIGN PRESSURE IN OPEN POSITION = **+/- 28 PSF**
- SHUTTER ASSEMBLY MUST BE CLOSED AND SECURED AND SHALL NOT BE LEFT IN THE OPEN POSITION IN THE EVENT OF A WIND STORM EVENT.
- ALL STEEL IN CONTACT WITH ALUMINUM SHALL BE PAINTED OR PLATED.
- ENGINEER SEAL AFFIXED HERETO VALIDATE STRUCTURAL DESIGN AS SHOWN ONLY. USE OF THIS SPECIFICATION BY CONTRACTOR, et. al. INDEMNIFIES & SAVES HARMLESS THIS ENGINEER FOR ALL COST & DAMAGES INCLUDING LEGAL FEES & APPELLATE FEES RESULTING FROM MATERIAL FABRICATION, SYSTEM ERECTION, & CONSTRUCTION PRACTICES BEYOND THAT WHICH IS CALLED FOR BY LOCAL, STATE & FEDERAL CODES & FROM DEVIATIONS OF THIS PLAN.



VISIT [ECALC.IO/TOWNCOUNTRY](http://ECALC.IO/TOWNCOUNTRY)  
 FOR SITE SPECIFIC DEVIATIONS & MORE INFORMATION ABOUT THIS DOCUMENT OR SCAN THIS QR CODE  
 VISIT [ENGINEERINGEXPRESS.COM/STORE](http://ENGINEERINGEXPRESS.COM/STORE) FOR ADDITIONAL PLANS, REPORTS & RESOURCES



FL# 16219.2

**ENGINEERING EXPRESS**  
 POSTAL ADDRESS:  
 401 W. ATLANTIC AVE R10 BOX 219  
 DELRAY BEACH, FL 33444  
[ENGINEERINGEXPRESS.COM](http://ENGINEERINGEXPRESS.COM)

**Town & Country INDUSTRIES**  
 Wholesale Aluminum and Building Products  
 400 WEST MCNAB ROAD, FT. LAUDERDALE, FL 33309  
 COLONIAL SHUTTER  
 FLORIDA BUILDING CODE EIGHTH EDITION (2023)  
 FLORIDA STATEWIDE APPROVAL (FSA FL#16219.2)

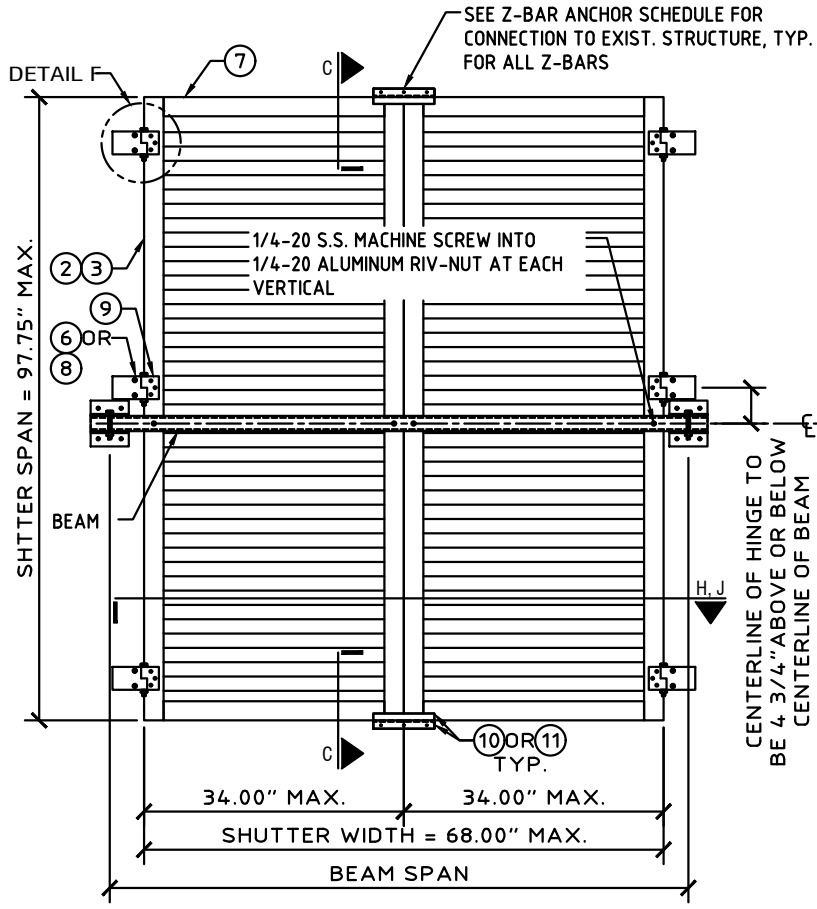
DRWN	CHKD	DATE
CCB	RWN	7/01/20
MLD	CCB	8/21/23

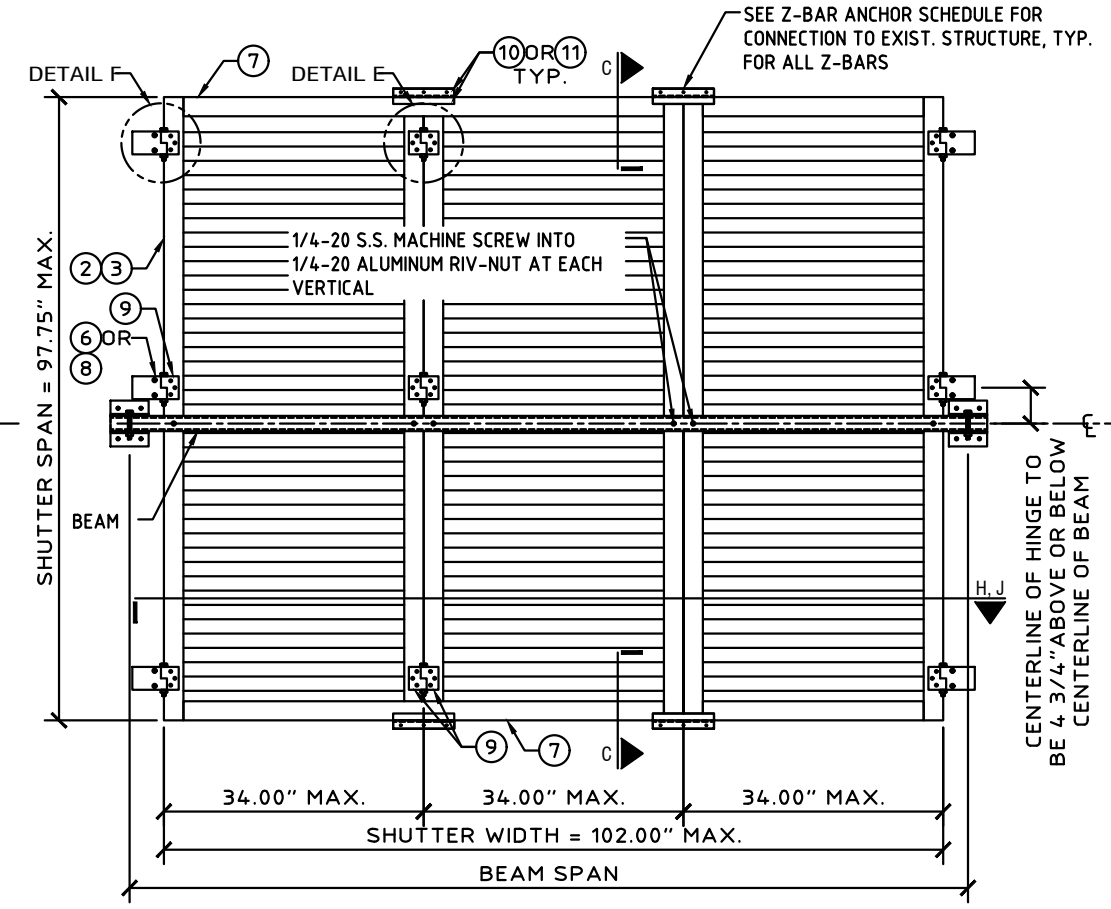
REMARKS
FBC 2020 (20-26193)
FBC 2023

COPYRIGHT ENGINEERING EXPRESS®  
**23-64831**  
 SCALE: NTS UNLESS NOTED  
 1 OF 7

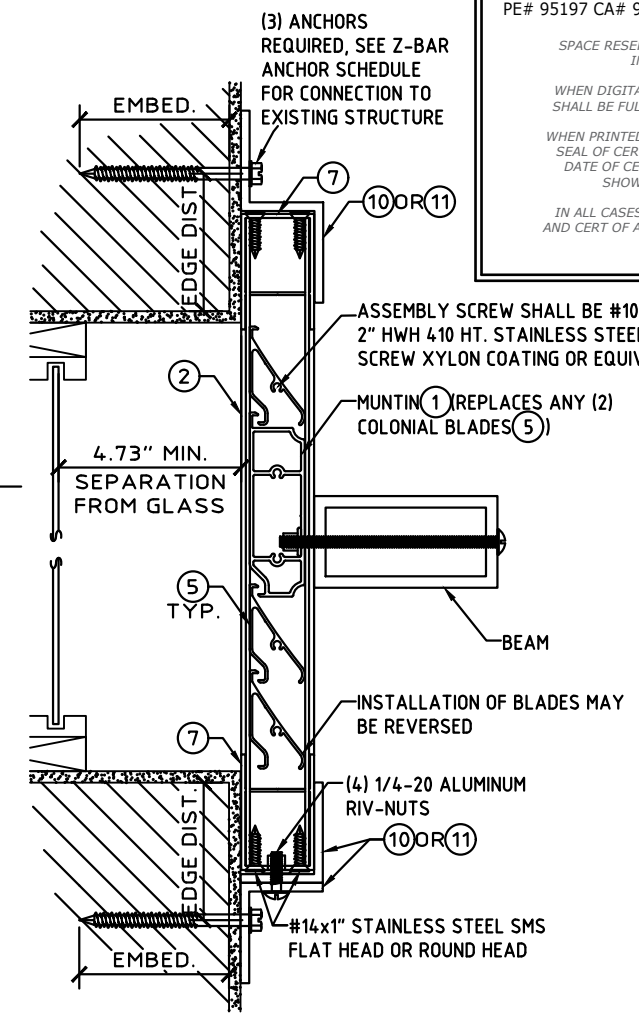
8/21/2023 10:30 AM MATTHEW c:\users\matthew\engineering\express\production - documents\projects\23-123-64831 - multiple products 2023 fbc update fl 16219\work\2023 fbc\23-64831 - fl16219.2 - dwg.dwg



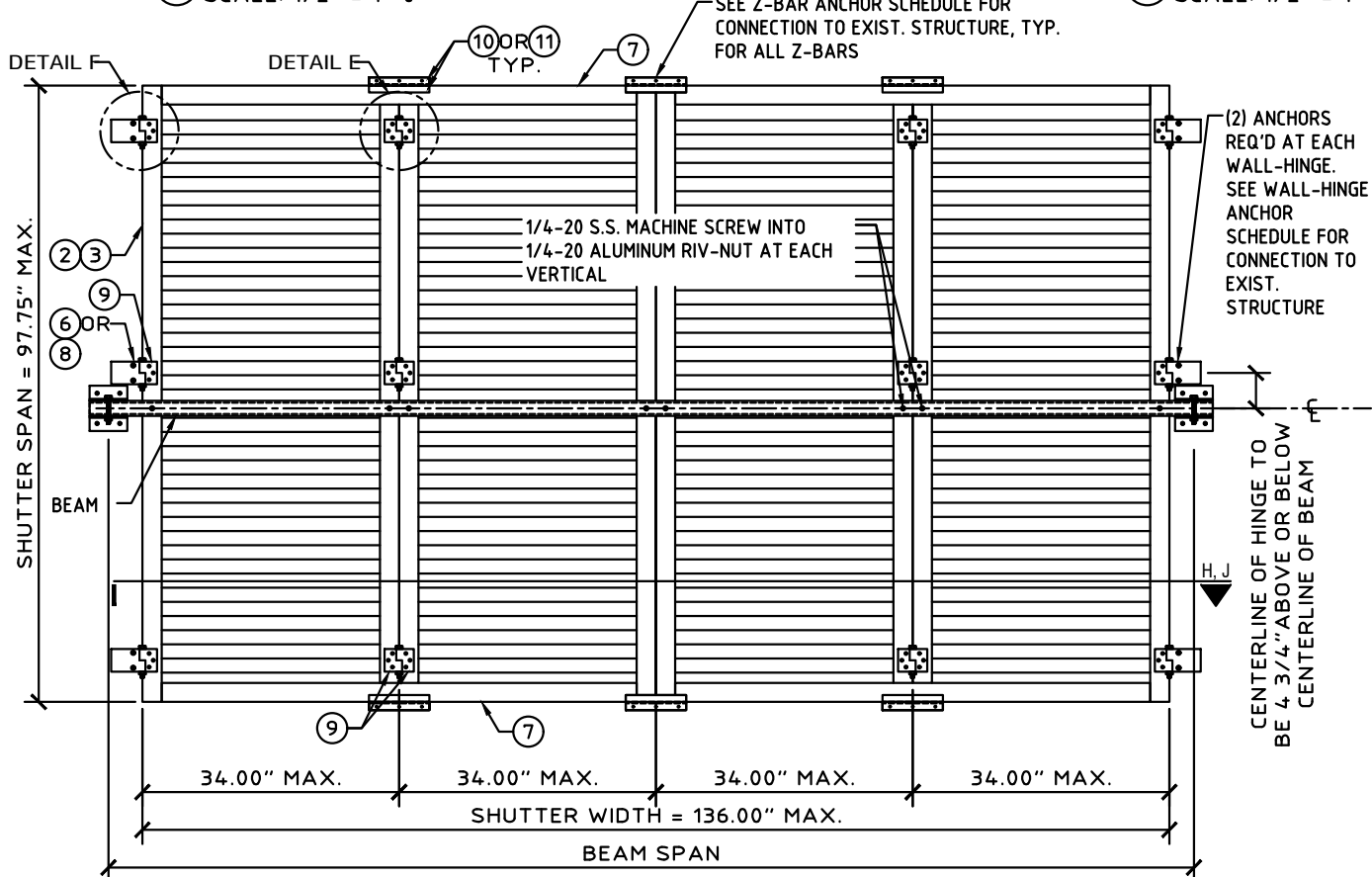
**(A) TYPICAL ELEVATION 2 PANEL**  
SCALE: 1/2" = 1'-0"



**(B) TYPICAL ELEVATION 3 PANEL**  
SCALE: 1/2" = 1'-0"



**(C) TYPICAL PANEL SECTION**  
SCALE: 3" = 1'-0"



**(D) TYPICAL ELEVATION 4 PANELS MAX.**  
SCALE: 1/2" = 1'-0"

**BEAM SCHEDULE**

BEAM SIZE	ALUMINUM ALLOY	SHUTTER SPAN	BEAM SPAN (+/- 79.5 PSF MAX)	WALL BRACKET ANCHOR TYPES (+69.3/-79.5 PSF MAX)		
				CONCRETE	HOLLOW BLOCK	WOOD (G=0.42 MIN)
2"x3"x1/8"	6063-T6	8'-1.75"	5' 6"	A,B,C,D,E	A,C,E	B,C
		6'-8"	6' 1"	A,B,C,D,E	A,B,C,E	B,C
		5'-10"	6' 6"	A,B,C,D,E	A,B,C,E	B,C
2"x4"x1/8"	6063-T6	8'-1.75"	6' 9"	A,B,C,D,E	A,C	B,C
		6'-8"	7' 5"	A,B,C,D,E	A,C	B,C
		5'-10"	8' 0"	A,B,C,D,E	A,C	B,C
2"x5"x1/8"	6063-T6	8'-1.75"	8' 0"	A,B,C,D,E	A,C	
		6'-8"	8' 10"	A,B,C,D,E	A,C	B,C
		5'-10"	9' 5"	A,B,C,D,E	A,C	B,C
2"x4"x1/4"	6061-T6	8'-1.75"	10' 5"	A,B,C,D,E		
		6'-8"	11' 6"	A,B,C,D,E	A,C	
		5'-10"	12' 4"	A,B,C,D,E	A,C	

- **TYPE A:** 1/4-20 ALL POINT SOLID SET ANCHORS:  
 - IN CONCRETE (3.35KSI MIN) WITH 7/8" MIN EMBED., 3" MIN EDGE DIST. AND 3" MIN SPACING  
 - IN HOLLOW CONCRETE BLOCK WITH 7/8" MIN EMBED., 3" MIN EDGE DIST. AND 3" MIN SPACING
- **TYPE B:** 1/2" EYEWALL ARMOR MALE/FEMALE BOLT OR 1/4-20 DEWALT PANELMATES (MALE/FEMALE):  
 - IN CONCRETE (3.35KSI MIN) WITH 1 3/4" MIN EMBED., 2 1/2" MIN EDGE DIST. AND 3" MIN SPACING  
 - IN HOLLOW CONCRETE BLOCK WITH 1 1/4" MIN EMBED., 2" MIN EDGE DIST. AND 3" MIN SPACING  
 - IN WOOD (G=0.42 MIN) WITH 1 1/2" MIN EMBED., 3/4" MIN EDGE DIST. AND 1 1/2" MIN SPACING
- **TYPE C:** 3/4" ITW TAPCON SG:  
 - IN CONCRETE (3.35KSI MIN) WITH 1 3/4" MIN EMBED., 2 1/2" MIN EDGE DIST. AND 3" MIN SPACING  
 - IN HOLLOW CONCRETE BLOCK WITH 1 1/4" MIN EMBED., 2" MIN EDGE DIST. AND 3" MIN SPACING  
 - IN WOOD (G=0.42 MIN) WITH 1 7/8" MIN EMBED., 3/4" MIN EDGE DIST. AND 1 1/2" MIN SPACING
- **TYPE D:** 3/4" MILLENNIUM MILLFAST (W/ T&C ULTRACOTE):  
 - IN CONCRETE (3.275KSI MIN) WITH 1 3/4" EMBED, 2 1/2" EDGE DIST., AND 4" MIN SPACING  
 - IN HOLLOW CONCRETE BLOCK WITH 1 1/4" EMBED., 2 1/2" MIN EDGE DIST. AND 4" MIN SPACING
- **TYPE E:** #12 SMS W/ 2" EYEWALL ARMOR NYLON INSERT:  
 - IN CONCRETE (2KSI MIN) WITH 2" EMBED, 2" EDGE DIST. AND 3" MIN SPACING  
 - IN HOLLOW CONCRETE BLOCK WITH 1 1/4" EMBED, 2" EDGE DIST. AND 3" MIN SPACING

COLBY BENNARDO, PE  
PE# 95197 CA# 9885

SPACE RESERVED FOR DIGITAL SEAL INFORMATION

WHEN DIGITALLY SEALED, THIS NOTE SHALL BE FULLY COVERED ON SHEET 1

WHEN PRINTED OR PHYSICALLY SEALED, SEAL OF CERTIFYING ENGINEER, AND DATE OF CERTIFICATION SHALL BE SHOWN TO THE RIGHT.

IN ALL CASES, CERTIFYING ENGINEER AND CERT OF AUTH AS LISTED ON STAMP

AUGUST 21, 2023

COLBY BENNARDO  
LICENSE  
No 95197  
STATE OF FLORIDA  
PROFESSIONAL ENGINEER

SIGNED:  
08/21/2023

FL# 16219.2

**ENGINEERING EXPRESS**

POSTAL ADDRESS:  
401 W. ATLANTIC AVE R10 BOX 219  
DELRAY BEACH, FL 33444  
ENGINEERINGEXPRESS.COM

**Town & Country INDUSTRIES**  
Wholesale Aluminum and Building Products

400 WEST MCNAB ROAD, FT. LAUDERDALE, FL 33309

COLONIAL SHUTTER

FLORIDA BUILDING CODE EIGHTH EDITION (2023)  
FLORIDA STATEWIDE APPROVAL (FSA FL#16219.2)

DRWN	CHKD	DATE
CCB	RWN	7/01/20
MJD	CCB	8/21/23

REMARKS  
FBC 2020 (20-26193)  
FBC 2023

COPYRIGHT ENGINEERING EXPRESS®

23-64831

SCALE: NTS UNLESS NOTED

2 OF 7

c:\users\matthew\engineering\express\production - documents\projects\23-123-64831 - multiple products 2023 fbc update fl 16219\work\2023 fbc\23-64831 - fl16219-2 - dwg.dwg

COLBY BENNARDO, PE  
PE# 95197 CA# 9885

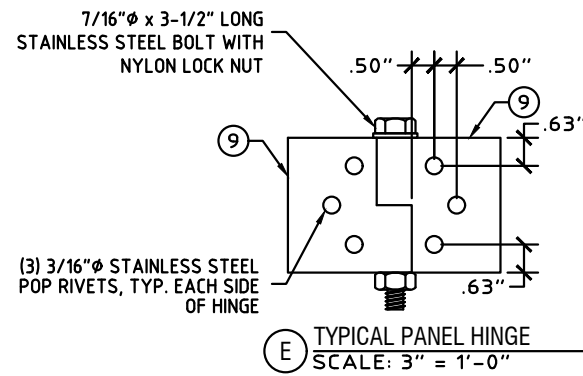
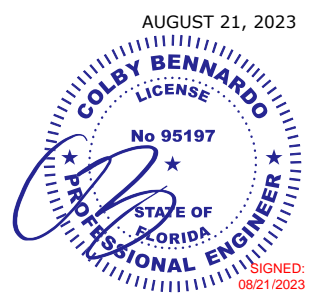
AUGUST 21, 2023

SPACE RESERVED FOR DIGITAL SEAL INFORMATION

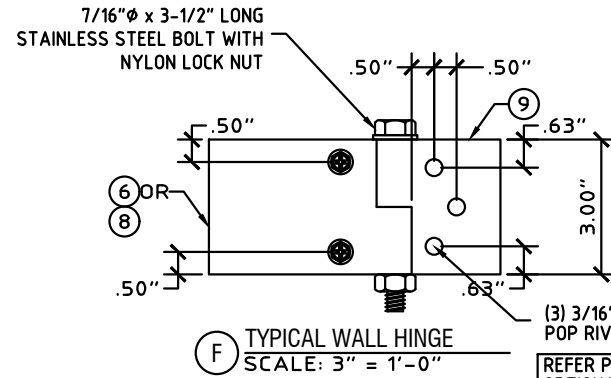
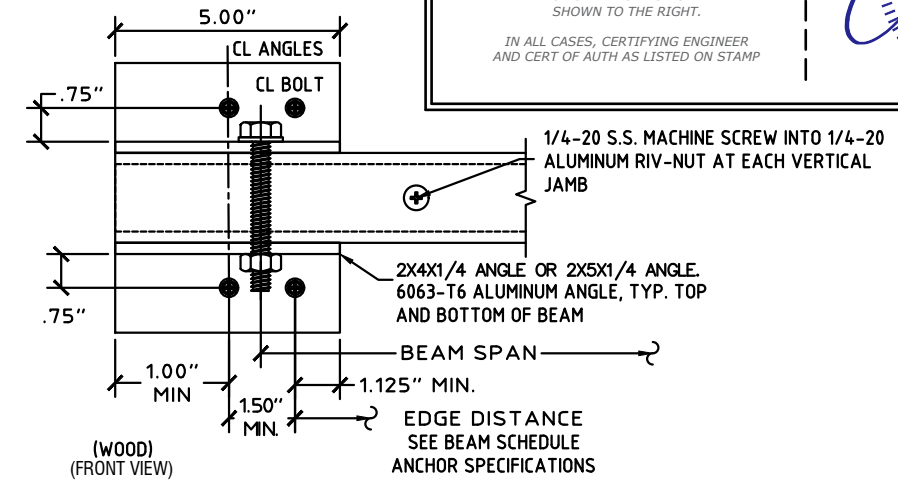
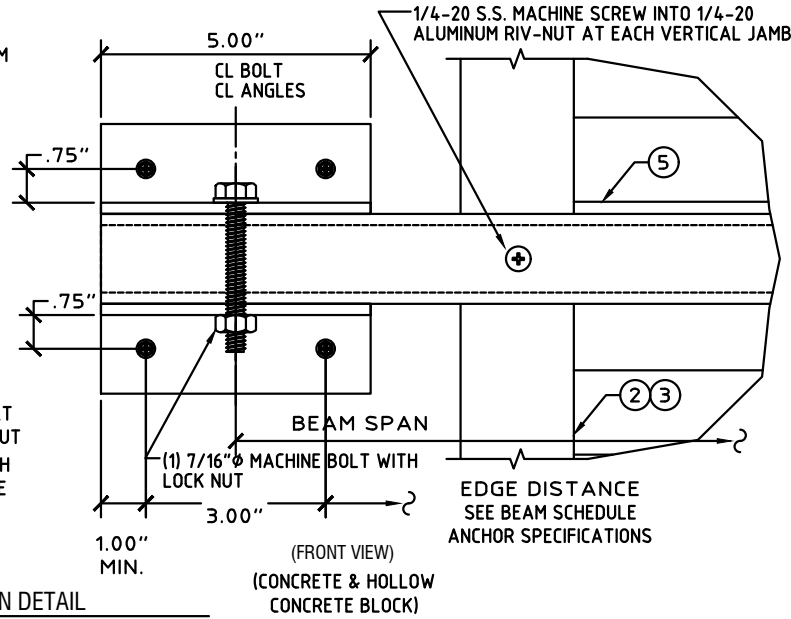
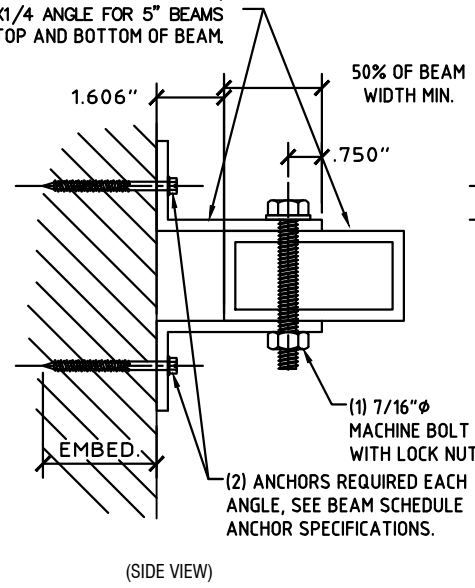
WHEN DIGITALLY SEALED, THIS NOTE SHALL BE FULLY COVERED ON SHEET 1

WHEN PRINTED OR PHYSICALLY SEALED, SEAL OF CERTIFYING ENGINEER, AND DATE OF CERTIFICATION SHALL BE SHOWN TO THE RIGHT.

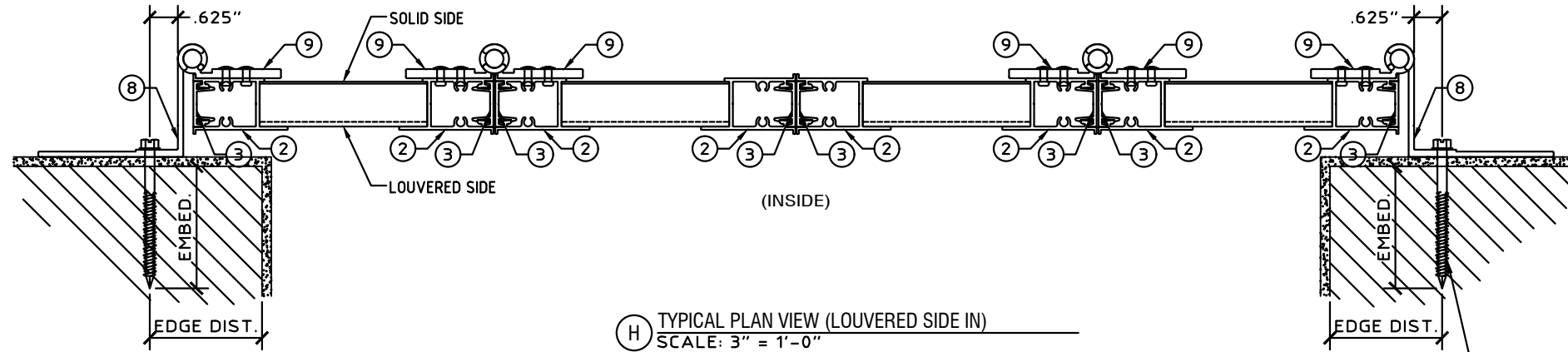
IN ALL CASES, CERTIFYING ENGINEER AND CERT OF AUTH AS LISTED ON STAMP



USE 2X4X1/4 ANGLE FOR 3" & 4" BEAMS,  
USE 2X5X1/4 ANGLE FOR 5" BEAMS  
, TYP. TOP AND BOTTOM OF BEAM



REFER PAGE 4 FOR  
OPTIONAL ALTERNATE  
HINGE DETAILS K1 & M1



Z-BAR ANCHOR SCHEDULE					
MANUF.	DIAMETER	DESCRIPTION	MIN. EDGE DISTANCE	MIN. EMBED.	MIN. SPACING
CONCRETE (MIN. f <sub>c</sub> = 3350 PSI)					
DEWALT	1/4 IN.	STAINLESS STEEL PANELMATE	2.50 IN	2.00 IN	3.00 IN
DEWALT	1/4 IN.	MALE PANELMATE (or P..PRO)	2.50 IN	2.00 IN	3.00 IN
DEWALT	1/4 IN.	FEMALE PANELMATE	2.50 IN	1.75 IN	3.00 IN
EYEWALL ARMOR	1/4 IN.	MALE/FEMALE BOLT	2.50 IN	1.75 IN	3.00 IN
ITW	1/4 IN.	TAPCON SG	2.50 IN	1.75 IN	3.00 IN
ALL-POINTS	1/4 IN.	SOLID-SET ANCHOR	2.00 IN	0.875 IN	3.00 IN
MILLENNIUM	1/4 IN.	MILLFAST	2.50 IN	1.75 IN	3.00 IN
HOLLOW CONCRETE BLOCK					
DEWALT	1/4 IN.	STAINLESS STEEL PANELMATE	2.00 IN	1.25 IN	3.00 IN
DEWALT	1/4 IN.	MALE PANELMATE (or P..PRO)	2.00 IN	1.25 IN	3.00 IN
DEWALT	1/4 IN.	FEMALE PANELMATE	2.00 IN	1.25 IN	3.00 IN
EYEWALL ARMOR	1/4 IN.	MALE/FEMALE BOLT	2.50 IN	1.25 IN	3.00 IN
ITW	1/4 IN.	TAPCON SG	2.50 IN	1.25 IN	3.00 IN
ALL-POINTS	1/4 IN.	SOLID-SET ANCHOR	2.50 IN	0.875 IN	3.00 IN
MILLENNIUM	1/4 IN.	MILLFAST	2.50 IN	1.25 IN	3.00 IN
WOOD (SOUTHERN YELLOW PINE, G=0.54)					
DEWALT	1/4 IN.	STAINLESS STEEL PANELMATE	0.75 IN	1.875 IN	3.00 IN
DEWALT	1/4 IN.	MALE PANELMATE (or P..PRO)	0.75 IN	1.875 IN	3.00 IN
DEWALT	1/4 IN.	FEMALE PANELMATE	0.75 IN	1.875 IN	3.00 IN
EYEWALL ARMOR	1/4 IN.	MALE/FEMALE BOLT	0.75 IN	1.50 IN	3.00 IN
ITW	1/4 IN.	TAPCON SG	0.75 IN	1.50 IN	3.00 IN
	1/4 IN.	S.S. HANGER BOLT	0.75 IN	1.25 IN	1.50 IN
WOOD (SPRUCE-PINE-FIR (SPF), G=0.42)					
	1/4 IN.	S.S. HANGER BOLT	0.75 IN	1.25 IN	1.50 IN

WALL-HINGE ANCHOR SCHEDULE					
MANUF.	DIAMETER	DESCRIPTION	MIN. EDGE DISTANCE	MIN. EMBED.	MIN. SPACING
CONCRETE (MIN. f <sub>c</sub> = 3192 PSI)					
ITW	1/4 IN.	SS TAPCON	2.50 IN	1.00 IN	2.00 IN
ITW	5/16 IN.	TAPCON XL	2.1875 IN	1.75 IN	2.00 IN
HOLLOW CONCRETE BLOCK					
DEWALT	1/4 IN.	ULTRACON	2.50 IN	1.25 IN	2.00 IN
ITW	5/16 IN.	TAPCON XL	2.1875 IN	1.75 IN	2.00 IN
WOOD (G=0.42 MIN)					
	#14	SMS OR WOOD SCREW	0.75 IN	1.50 IN	1.50 IN
	1/4 IN.	LAG SCREW	0.75 IN	1.25 IN	1.50 IN

FL# 16219.2

**ENGINEERING EXPRESS**  
POSTAL ADDRESS:  
401 W. ATLANTIC AVE R10 BOX 219  
DELRAY BEACH, FL 33444  
ENGINEERINGEXPRESS.COM

**Town & Country INDUSTRIES**  
Wholesale Aluminum and Building Products  
400 WEST MCNAB ROAD, FT. LAUDERDALE, FL 33309  
COLONIAL SHUTTER  
FLORIDA BUILDING CODE EIGHTH EDITION (2023)  
FLORIDA STATEWIDE APPROVAL (FSA FL#16219.2)

DRWN	CHKD	DATE
CCB	RWN	7/01/20
MLD	CCB	8/21/23

REMARKS  
FBC 2020 (20-26193)  
FBC 2023

23-64831

SCALE: NTS UNLESS NOTED

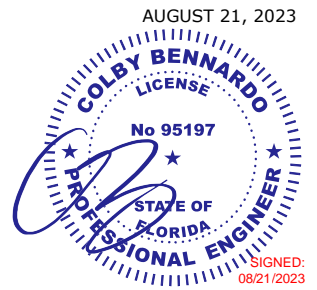
3 OF 7

SPACE RESERVED FOR DIGITAL SEAL INFORMATION

WHEN DIGITALLY SEALED, THIS NOTE SHALL BE FULLY COVERED ON SHEET 1

WHEN PRINTED OR PHYSICALLY SEALED, SEAL OF CERTIFYING ENGINEER, AND DATE OF CERTIFICATION SHALL BE SHOWN TO THE RIGHT.

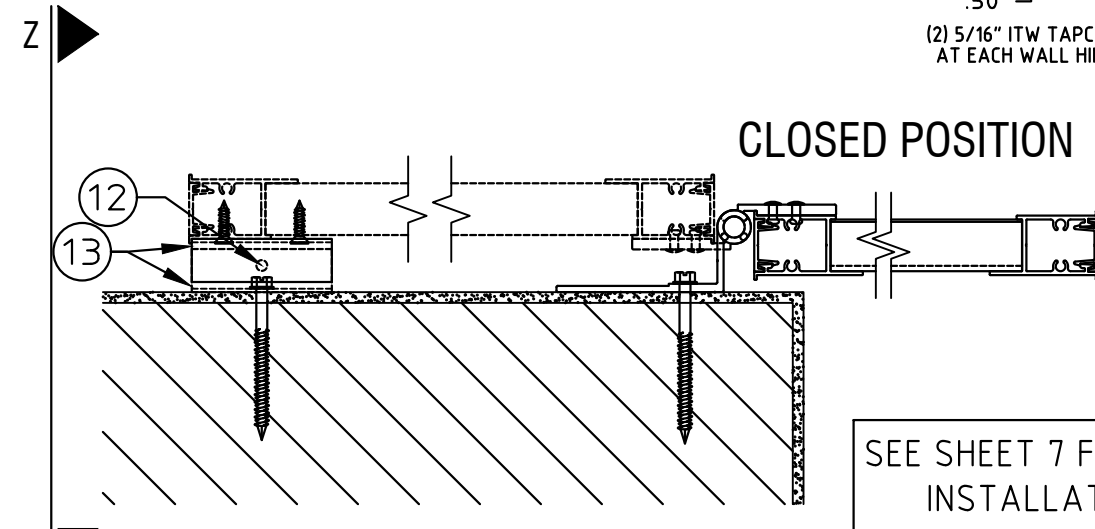
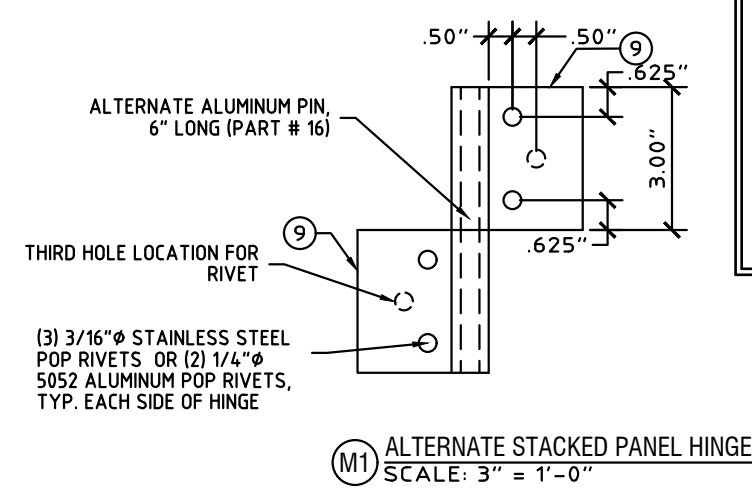
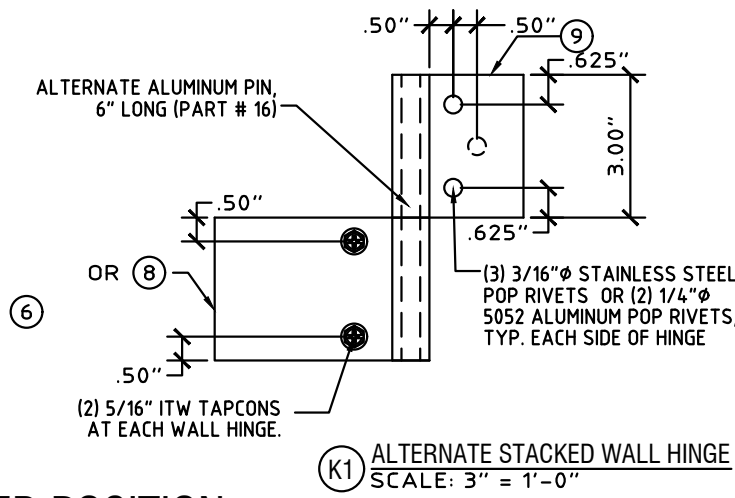
IN ALL CASES, CERTIFYING ENGINEER AND CERT OF AUTH AS LISTED ON STAMP



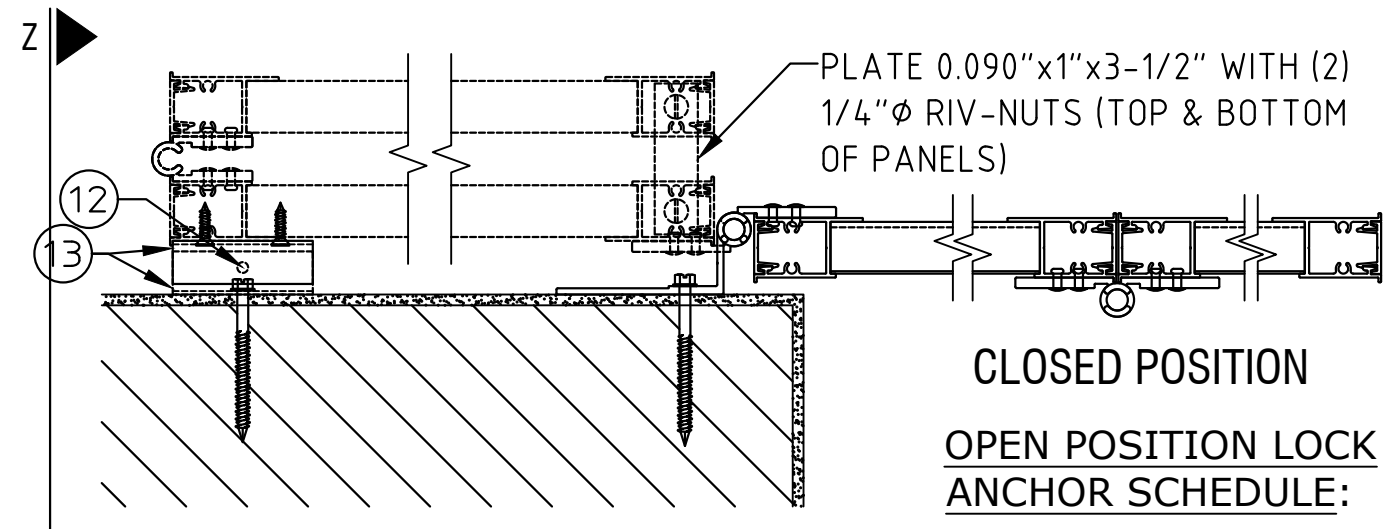
FL# 16219.2

**ENGINEERING EXPRESS**  
POSTAL ADDRESS:  
401 W. ATLANTIC AVE R10 BOX 219  
DELRAY BEACH, FL 33444  
ENGINEERINGEXPRESS.COM

**Town & Country INDUSTRIES**  
Wholesale Aluminum and Building Products  
400 WEST MCNAB ROAD, FT. LAUDERDALE, FL 33309  
COLONIAL SHUTTER  
FLORIDA BUILDING CODE EIGHTH EDITION (2023)  
FLORIDA STATEWIDE APPROVAL (FSA FL#16219.2)

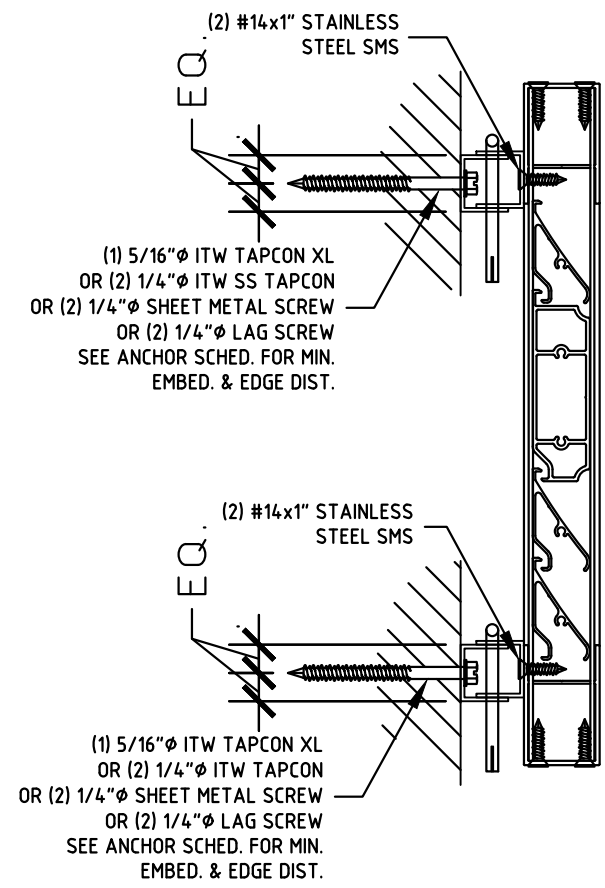


SEE SHEET 7 FOR ALL PLAN VIEW INSTALLATION POSITIONS



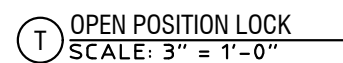
**OPEN POSITION LOCK ANCHOR SCHEDULE:**

- WITH "C" CLIPS OR DOUBLE "C" CLIPS:**
- TO 2899 PSI MIN. CONCRETE:**
    - (1) 5/16" ITW TAPCON XL W/ 1-3/4" MIN. EMBEDMENT AND 2" MIN. EDGE DISTANCE.
  - TO 3192 PSI MIN. CONCRETE:**
    - (2) 1/4" ITW SS TAPCON W/ 1-3/4" MIN. EMBEDMENT AND 1" MIN. EDGE DISTANCE.
  - TO HOLLOW CONCRETE BLOCK:**
    - (1) 5/16" ITW TAPCON XL W/ 1-3/4" MIN. EMBEDMENT AND 4" MIN. EDGE DISTANCE.
  - TO G=0.42 MIN. WOOD HOST STRUCTURE:**
    - (2) 1/4" WOOD SCREWS OR SHEET METAL SCREWS W/ 1-3/4" MIN. THREAD PENETRATION AND 3/4" MIN. EDGE DISTANCE.
    - (2) 1/4" LAG SCREWS W/ 1-1/2" MIN. THREAD PENETRATION AND 3/4" MIN. EDGE DISTANCE.



(HINGES NOT SHOWN FOR CLARITY)  
(DOUBLE "C" CLIP) (SINGLE "C" CLIP)

NOTE:  
CLIPS REQ'D TOP & BOTTOM FOR SPANS > 69". ONE CLIP REQ'D AT MID-SPAN (±3") FOR SPANS ≤ 69".



DRWN	CHKD	DATE
CCB	RWN	7/01/20
M.L.D.	CCB	8/21/23

REMARKS
FBC 2020 (20-26193)
FBC 2023

23-64831  
SCALE: NTS UNLESS NOTED

c:\users\matthew\engineering\express\production - documents\projects\23-123-64831\_multiple\_products\_2023\_fbc\_update\_fl\_16219\work\2023\_fbc\_update\_fl\_16219-2 - dwg.dwg

COLBY BENNARDO, PE  
PE# 95197 CA# 9885

AUGUST 21, 2023

SPACE RESERVED FOR DIGITAL SEAL  
INFORMATION

WHEN DIGITALLY SEALED, THIS NOTE  
SHALL BE FULLY COVERED ON SHEET 1

WHEN PRINTED OR PHYSICALLY SEALED,  
SEAL OF CERTIFYING ENGINEER, AND  
DATE OF CERTIFICATION SHALL BE  
SHOWN TO THE RIGHT.

IN ALL CASES, CERTIFYING ENGINEER  
AND CERT OF AUTH AS LISTED ON STAMP



FL# 16219.2

**ENGINEERING EXPRESS**

POSTAL ADDRESS:  
401 W. ATLANTIC AVE R10 BOX 219  
DELRAY BEACH, FL 33444  
ENGINEERINGEXPRESS.COM

**Town & Country INDUSTRIES**  
Wholesale Aluminum and Building Products  
400 WEST MCNAB ROAD, FT. LAUDERDALE, FL 33309  
COLONIAL SHUTTER  
FLORIDA BUILDING CODE EIGHTH EDITION (2023)  
FLORIDA STATEWIDE APPROVAL (FSA FL#16219.2)

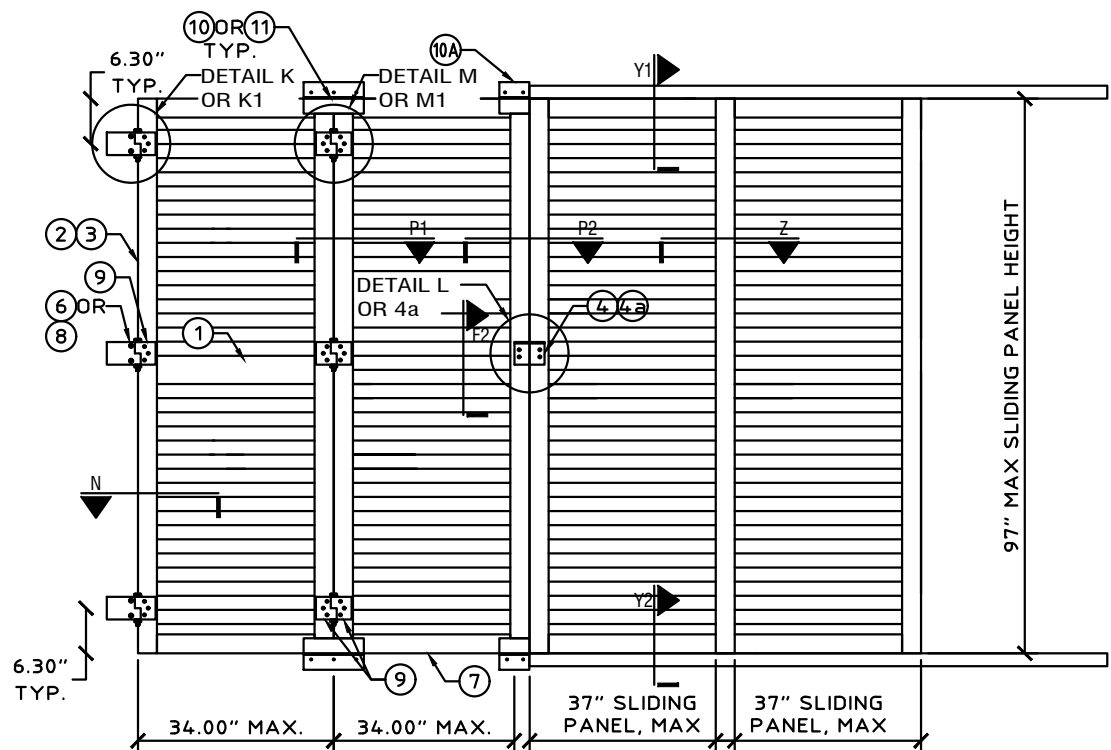
REMARKS	DRWN	CHKD	DATE
FBC 2020 (20-26193)	CCB	RWN	7/01/20
FBC 2023	MLD	CCB	8/21/23

COPYRIGHT ENGINEERING EXPRESS®

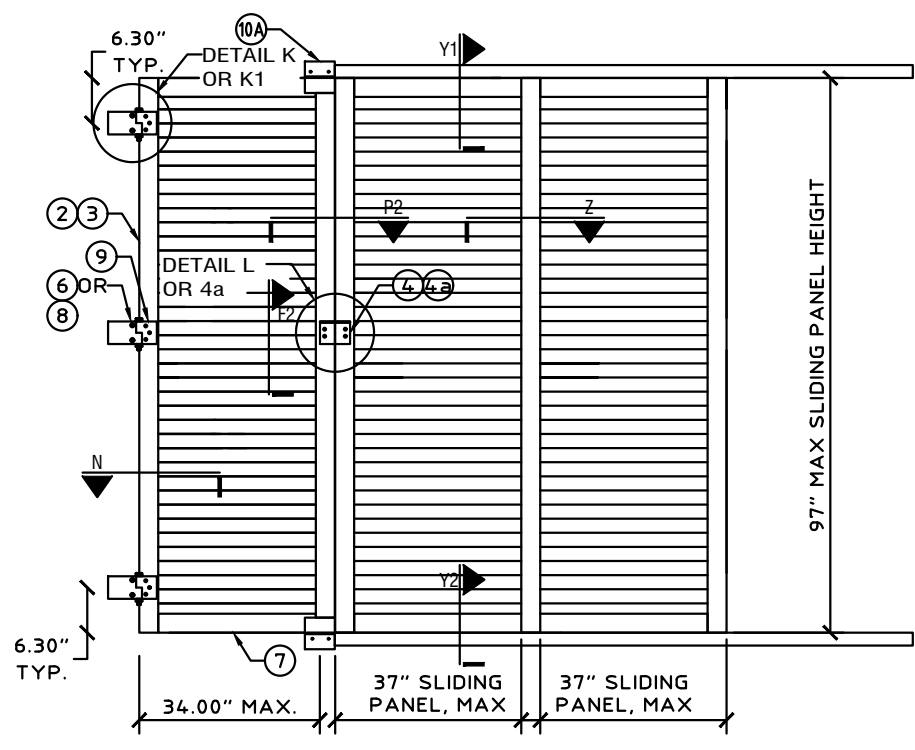
23-64831

SCALE: NTS UNLESS NOTED

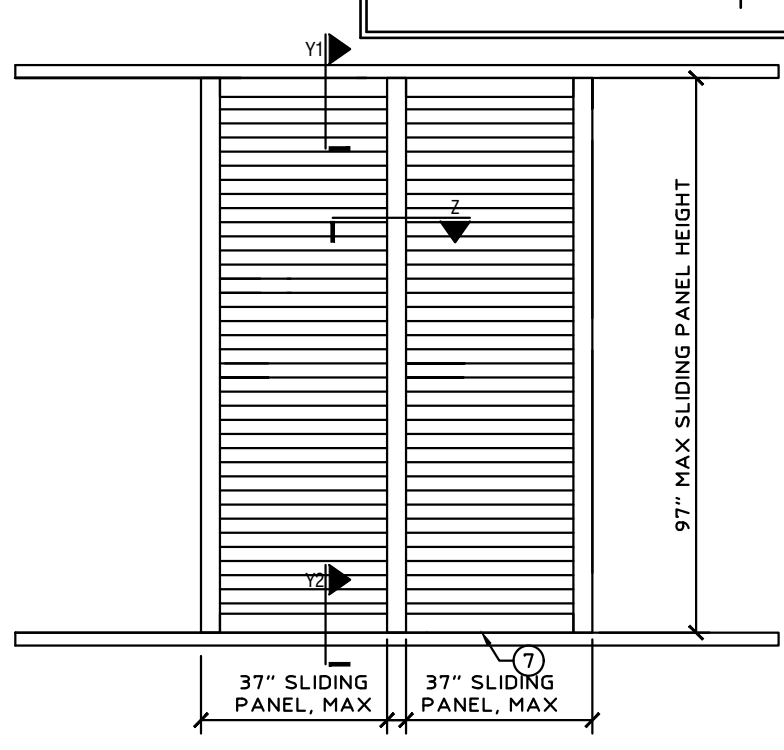
5 OF 7



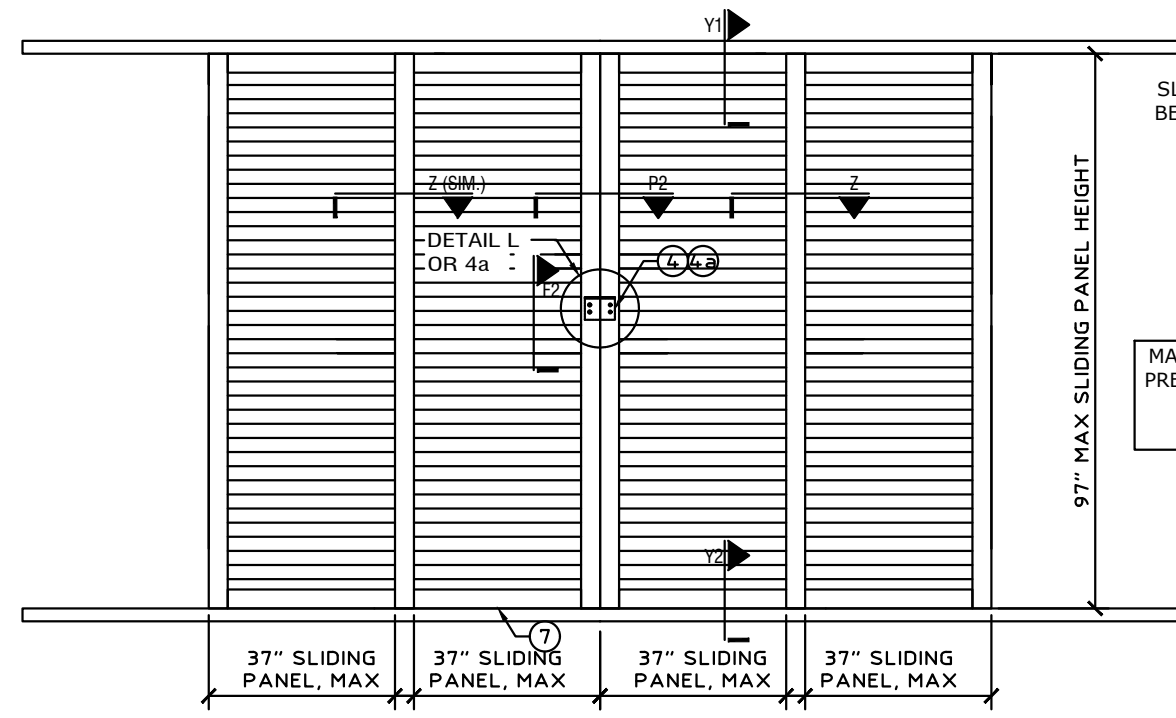
X1 ELEVATION: 2 HINGED AND 2 SLIDING PANELS  
SCALE: N.T.S.



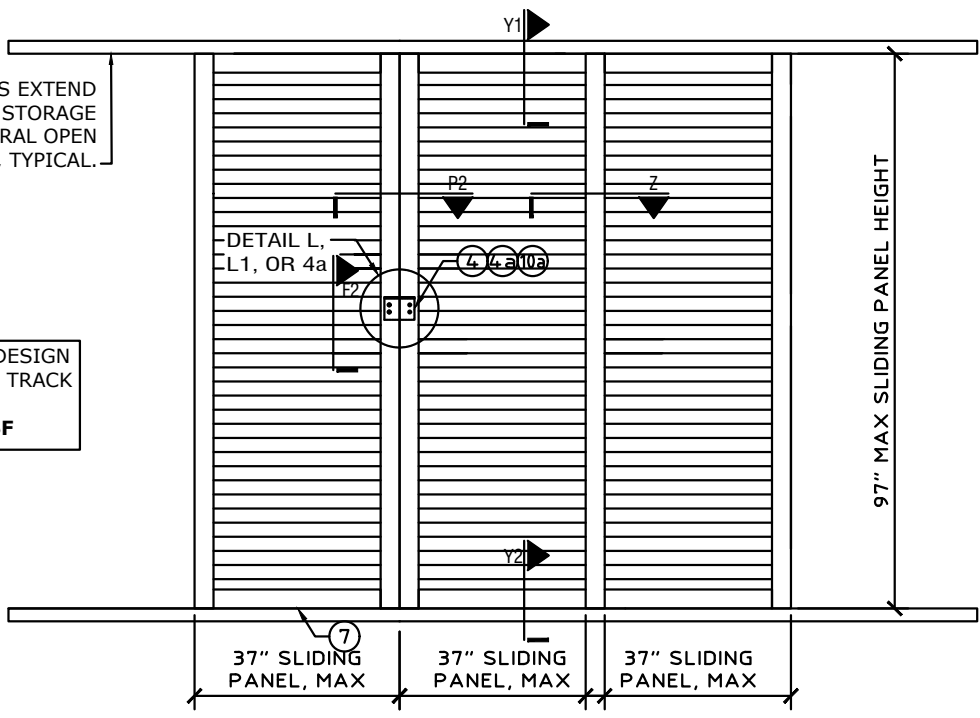
X2 ELEVATION: 1 HINGED AND 2 SLIDING PANELS  
SCALE: N.T.S.



X5 ELEVATION: 2 SLIDING PANELS  
SCALE: N.T.S.



X3 ELEVATION: 4 SLIDING PANELS  
SCALE: N.T.S.



X4 ELEVATION: 3 SLIDING PANELS  
SCALE: N.T.S.

SLIDING PANEL TRACKS EXTEND BEYOND FOR SHUTTER STORAGE IN NON-STRUCTURAL OPEN POSITION, TYPICAL.

MAXIMUM ALLOWABLE DESIGN PRESSURE FOR SLIDING TRACK OPTION:  
**+57.2 / -66.2 PSF**

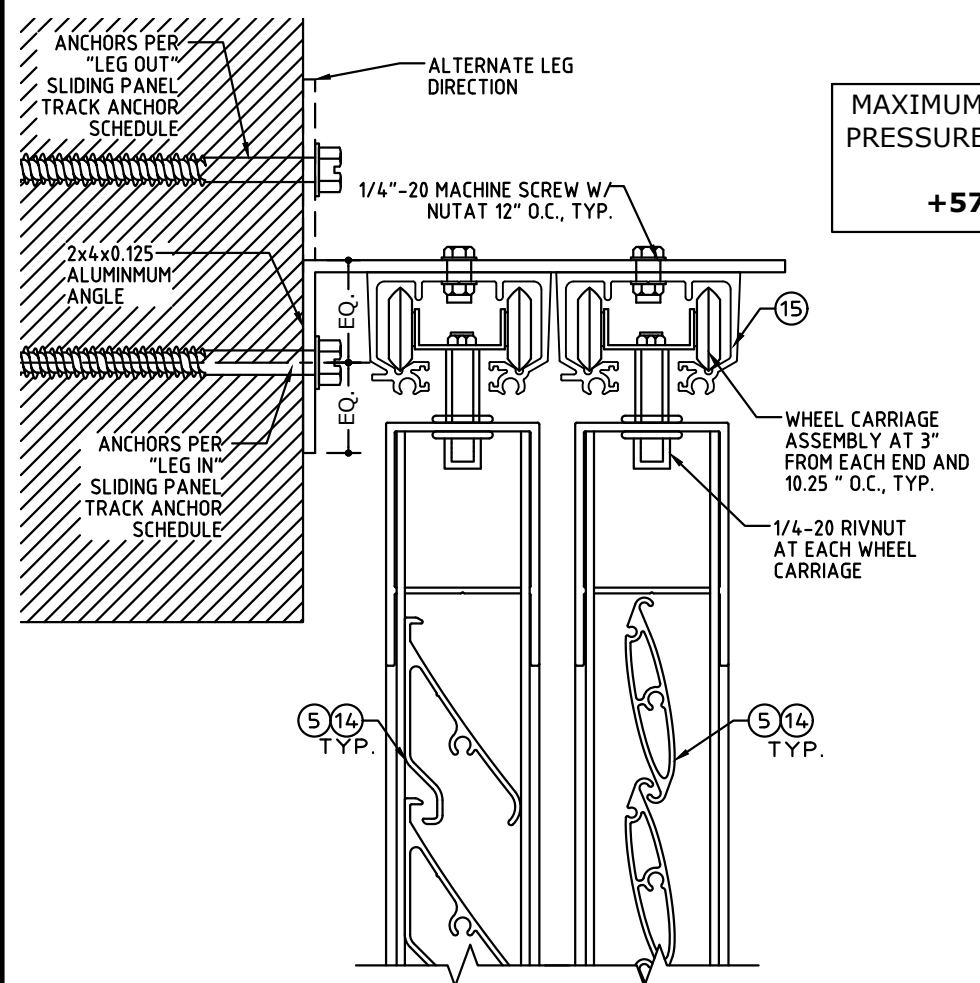
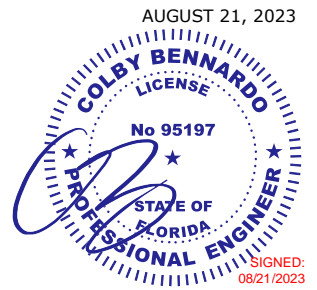
NOTE: SLIDING PANEL CONSTRUCTION SAME AS HINGED PANELS.

8/21/2023 10:30 AM MATTHEW c:\users\matthew\engineering\express\production - documents\projects\23-123-64831 - multiple products 2023 fbc update fl 16219\work\2023 fbc\23-64831 - fl16219.2 - dwg.dwg

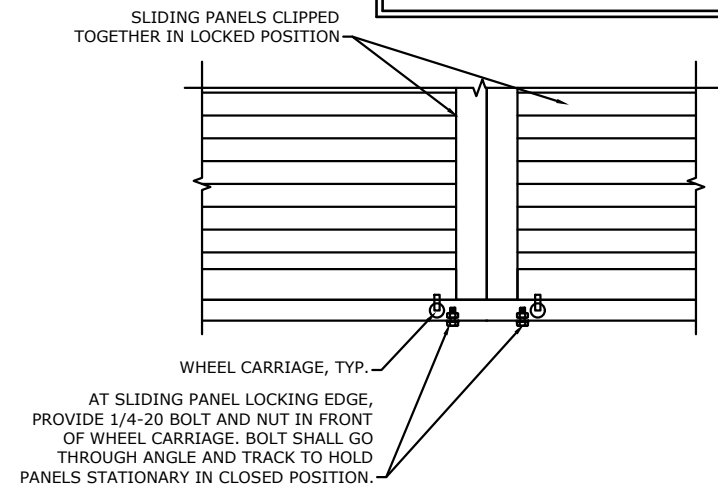
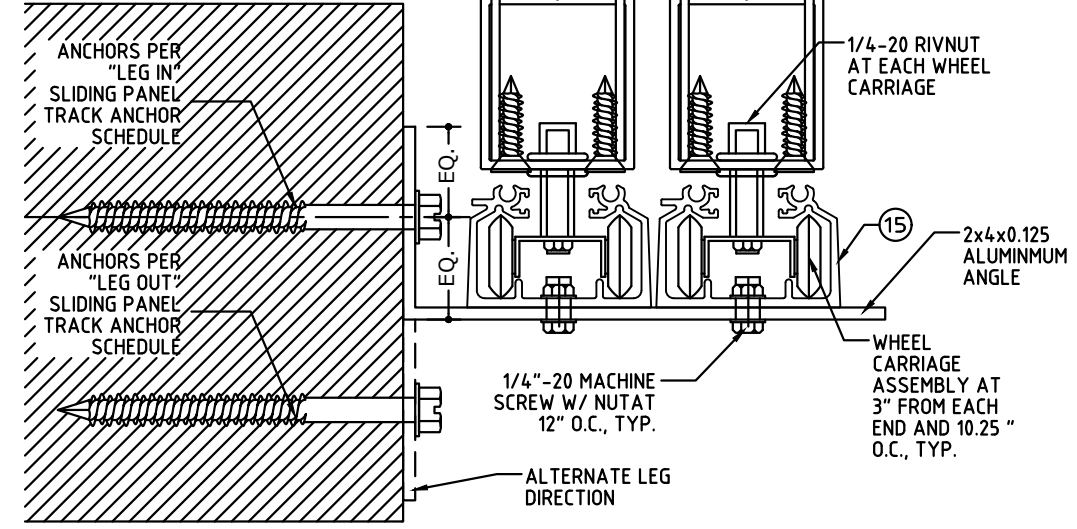
SPACE RESERVED FOR DIGITAL SEAL INFORMATION  
WHEN DIGITALLY SEALED, THIS NOTE SHALL BE FULLY COVERED ON SHEET 1

WHEN PRINTED OR PHYSICALLY SEALED, SEAL OF CERTIFYING ENGINEER, AND DATE OF CERTIFICATION SHALL BE SHOWN TO THE RIGHT.

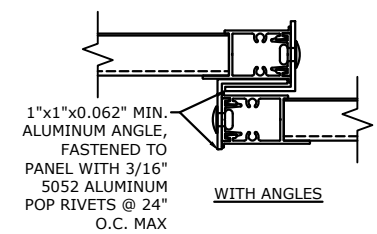
IN ALL CASES, CERTIFYING ENGINEER AND CERT OF AUTH AS LISTED ON STAMP



**MAXIMUM ALLOWABLE DESIGN PRESSURE FOR SLIDING TRACK OPTION:  
+57.2 / -66.2 PSF**



**ZZ WHEEL CARRIAGE STOPS FOR SLIDING PANELS**  
SCALE: N.T.S.



**Z SLIDING PANEL INTERLOCK**  
SCALE: N.T.S.

**"LEG IN" SLIDING PANEL TRACK ANCHOR SCHEDULE:**

HOST STRUCTURE	ANCHOR	SLIDING PANEL VERTICAL SPAN					
		36"	48"	60"	72"	84"	97"
CONCRETE (3192 PSI MIN.)	1/4" ITW SS TAPCONS W/ 1-3/4" MIN. EMBEDMENT AND 2-1/2" MIN. EDGE DISTANCE	16" O.C.	16" O.C.	16" O.C.	16" O.C.	16" O.C.	16" O.C.
	1/4" DEWALT ULTRACON W/ 1-3/4" MIN. EMBEDMENT AND 2-1/2" MIN. EDGE DISTANCE	16" O.C.	16" O.C.	16" O.C.	16" O.C.	16" O.C.	16" O.C.
CONCRETE (3500 PSI MIN.)	1/4" MILLENIUM MILLFAST W/ 1-3/4" MIN. EMBEDMENT AND 2-1/2" MIN. EDGE DISTANCE	16" O.C.	16" O.C.	16" O.C.	16" O.C.	16" O.C.	16" O.C.
HOLLOW CONCRETE BLOCK	1/4" MILLENIUM MILLFAST W/ 1-1/4" MIN. EMBEDMENT AND 2-1/2" MIN. EDGE DISTANCE	16" O.C.	13" O.C.	11" O.C.	9" O.C.	8" O.C.	7" O.C.
	1/4" ITW SS TAPCONS W/ 1-1/4" MIN. EMBEDMENT AND 2-1/2" MIN. EDGE DISTANCE	15" O.C.	12" O.C.	9" O.C.	8" O.C.	7" O.C.	6" O.C.
	1/4" DEWALT ULTRACON W/ 1-1/4" MIN. EMBEDMENT AND 2-1/2" MIN. EDGE DISTANCE	16" O.C.	13" O.C.	10" O.C.	8" O.C.	7" O.C.	6" O.C.
	5/16" ITW TAPCON XL W/ 1-3/4" MIN. EMBEDMENT AND 4" MIN. EDGE DISTANCE.	16" O.C.	16" O.C.	15" O.C.	13" O.C.	11" O.C.	9" O.C.
	5/16" DEWALT ULTRACON W/ 1-1/4" MIN. EMBEDMENT AND 3-1/8" MIN. EDGE DISTANCE	16" O.C.	16" O.C.	16" O.C.	14" O.C.	12" O.C.	10" O.C.
WOOD (G=0.42 MIN.)	1/4" LAG SCREW W/ 1-1/2" MIN. EMBEDMENT AND 3/4" MIN. EDGE DISTANCE	16" O.C.	16" O.C.	16" O.C.	16" O.C.	16" O.C.	16" O.C.
	#14 SMS OR WOOD SCREW W/ 1-1/2" MIN. EMBEDMENT AND 3/4" MIN. EDGE DISTANCE.	16" O.C.	16" O.C.	16" O.C.	16" O.C.	15" O.C.	13" O.C.

**NOTES:** TABLE PROVIDES MAXIMUM ANCHOR SPACING FOR INDICATED ANCHOR TYPES AND SLIDING PANEL VERTICAL SPANS FOR "LEG IN" CONDITION. ANCHORS SHALL BE LOCATED 2" MAX FROM TRACK ENDS.  
\*MILLENIUM MILLFAST SCREWS SHALL HAVE T&C ULTRACOTE

**"LEG OUT" SLIDING PANEL TRACK ANCHOR SCHEDULE:**

HOST STRUCTURE	ANCHOR	SLIDING PANEL VERTICAL SPAN					
		36"	48"	60"	72"	84"	97"
CONCRETE (3192 PSI MIN.)	1/4" ITW SS TAPCONS W/ 1-3/4" MIN. EMBEDMENT AND 2-1/2" MIN. EDGE DISTANCE	16" O.C.	13" O.C.	10" O.C.	9" O.C.	7" O.C.	6" O.C.
	1/4" DEWALT ULTRACON W/ 1-3/4" MIN. EMBEDMENT AND 2-1/2" MIN. EDGE DISTANCE	16" O.C.	16" O.C.	13" O.C.	11" O.C.	9" O.C.	8" O.C.
CONCRETE (3500 PSI MIN.)	1/4" MILLENIUM MILLFAST W/ 1-3/4" MIN. EMBEDMENT AND 2-1/2" MIN. EDGE DISTANCE	16" O.C.	13" O.C.	10" O.C.	9" O.C.	7" O.C.	6" O.C.
HOLLOW CONCRETE BLOCK	1/4" MILLENIUM MILLFAST W/ 1-1/4" MIN. EMBEDMENT AND 2-1/2" MIN. EDGE DISTANCE	7" O.C.	5" O.C.	4" O.C.			
	1/4" ITW SS TAPCONS W/ 1-1/4" MIN. EMBEDMENT AND 2-1/2" MIN. EDGE DISTANCE	6" O.C.	4" O.C.	4" O.C.	3" O.C.	3" O.C.	
	1/4" DEWALT ULTRACON W/ 1-1/4" MIN. EMBEDMENT AND 2-1/2" MIN. EDGE DISTANCE	6" O.C.	5" O.C.	4" O.C.	3" O.C.	3" O.C.	
	5/16" ITW TAPCON XL W/ 1-3/4" MIN. EMBEDMENT AND 4" MIN. EDGE DISTANCE.	10" O.C.	7" O.C.	6" O.C.	5" O.C.	4" O.C.	4" O.C.
	5/16" DEWALT ULTRACON W/ 1-1/4" MIN. EMBEDMENT AND 3-1/8" MIN. EDGE DISTANCE	10" O.C.	8" O.C.	6" O.C.			
WOOD (G=0.42 MIN.)	1/4" LAG SCREW W/ 1-1/2" MIN. EMBEDMENT AND 3/4" MIN. EDGE DISTANCE	16" O.C.	14" O.C.	11" O.C.	10" O.C.	8" O.C.	7" O.C.
	#14 SMS OR WOOD SCREW W/ 1-1/2" MIN. EMBEDMENT AND 3/4" MIN. EDGE DISTANCE.	13" O.C.	10" O.C.	8" O.C.	7" O.C.	6" O.C.	5" O.C.

**NOTES:** TABLE PROVIDES MAXIMUM ANCHOR SPACING FOR INDICATED ANCHOR TYPES AND SLIDING PANEL VERTICAL SPANS FOR ALTERNATE "LEG OUT" CONDITION. ANCHORS SHALL BE LOCATED 2" MAX FROM TRACK ENDS.  
\*MILLENIUM MILLFAST SCREWS SHALL HAVE T&C ULTRACOTE

FL# 16219.2

**ENGINEERING EXPRESS**  
POSTAL ADDRESS:  
401 W. ATLANTIC AVE R10 BOX 219  
DELRAY BEACH, FL 33444  
ENGINEERINGEXPRESS.COM

**Town & Country INDUSTRIES**  
Wholesale Aluminum and Building Products  
400 WEST MCNAB ROAD, FT. LAUDERDALE, FL 33309  
COLONIAL SHUTTER  
FLORIDA BUILDING CODE EIGHTH EDITION (2023)  
FLORIDA STATEWIDE APPROVAL (FSA FL#16219.2)

REMARKS	DRWN	CHKD	DATE
FBC 2020 (20-26193) FBC 2023	CCB	CCB	7/01/20 8/21/23

COPYRIGHT ENGINEERING EXPRESS®  
**23-64831**  
SCALE: NTS UNLESS NOTED  
7

COLBY BENNARDO, PE  
PE# 95197 CA# 9885

SPACE RESERVED FOR DIGITAL SEAL  
INFORMATION

WHEN DIGITALLY SEALED, THIS NOTE  
SHALL BE FULLY COVERED ON SHEET 1

WHEN PRINTED OR PHYSICALLY SEALED,  
SEAL OF CERTIFYING ENGINEER, AND  
DATE OF CERTIFICATION SHALL BE  
SHOWN TO THE RIGHT.

IN ALL CASES, CERTIFYING ENGINEER  
AND CERT OF AUTH AS LISTED ON STAMP



FL# 16219.2

**ENGINEERING EXPRESS**

POSTAL ADDRESS:  
401 W. ATLANTIC AVE R10 BOX 219  
DELRAY BEACH, FL 33444  
ENGINEERINGEXPRESS.COM

**Town & Country INDUSTRIES**  
Wholesale Aluminum and Building Products  
400 WEST MCNAB ROAD, FT. LAUDERDALE, FL 33309  
COLONIAL SHUTTER  
FLORIDA BUILDING CODE EIGHTH EDITION (2023)  
FLORIDA STATEWIDE APPROVAL (FSA FL#16219.2)

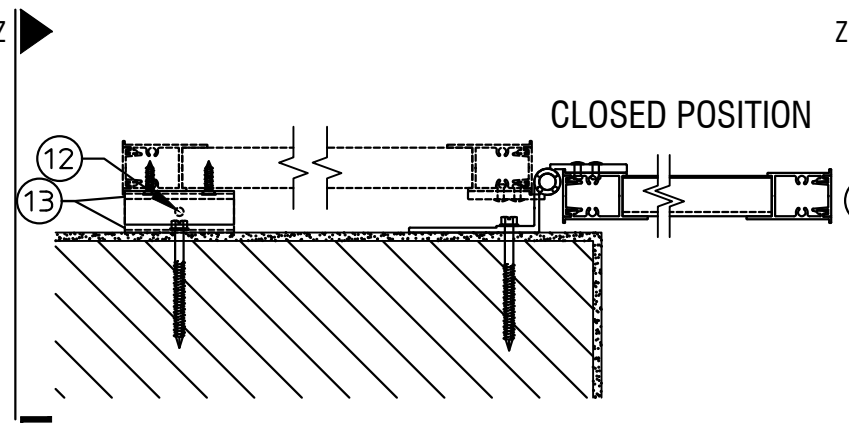
REMARKS	DRWN	CHKD	DATE
FBC 2020 (20-26193)	CCB	RWN	7/01/20
FBC 2023	MLD	CCB	8/21/23

COPYRIGHT ENGINEERING EXPRESS®

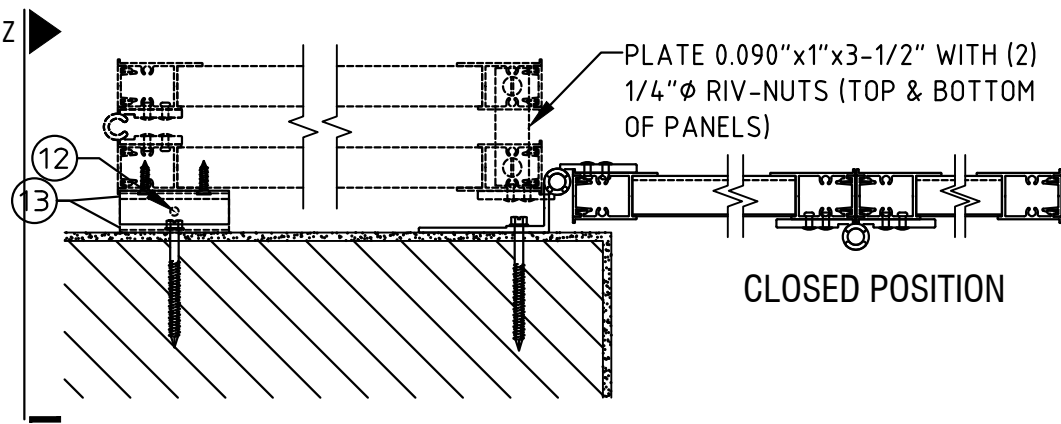
23-64831

SCALE: NTS UNLESS NOTED

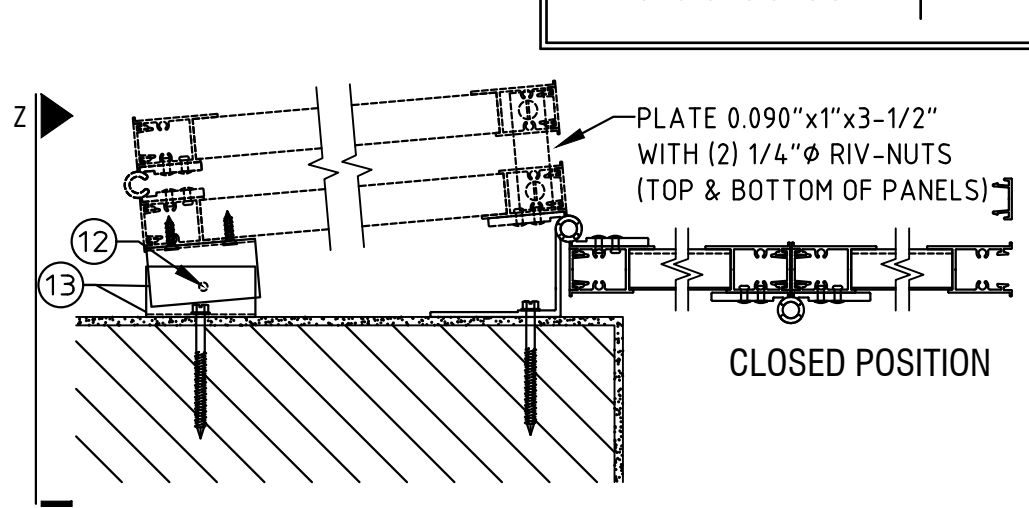
7 OF 7



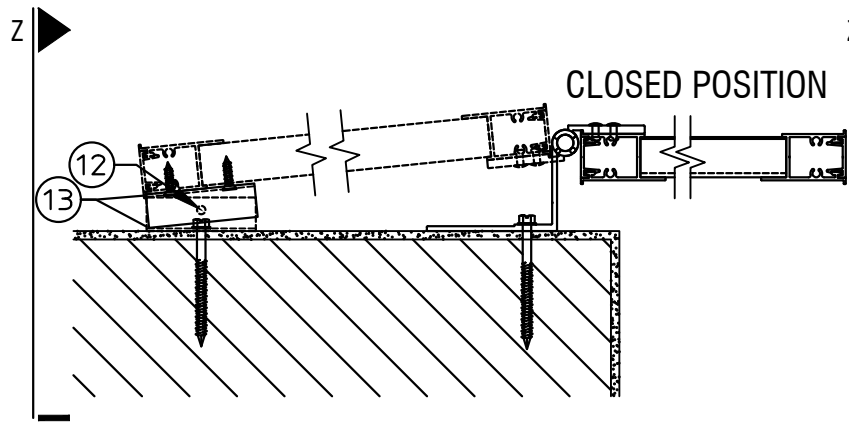
**R** PLAN VIEW 1  
SCALE: 1-1/2" = 1'-0"



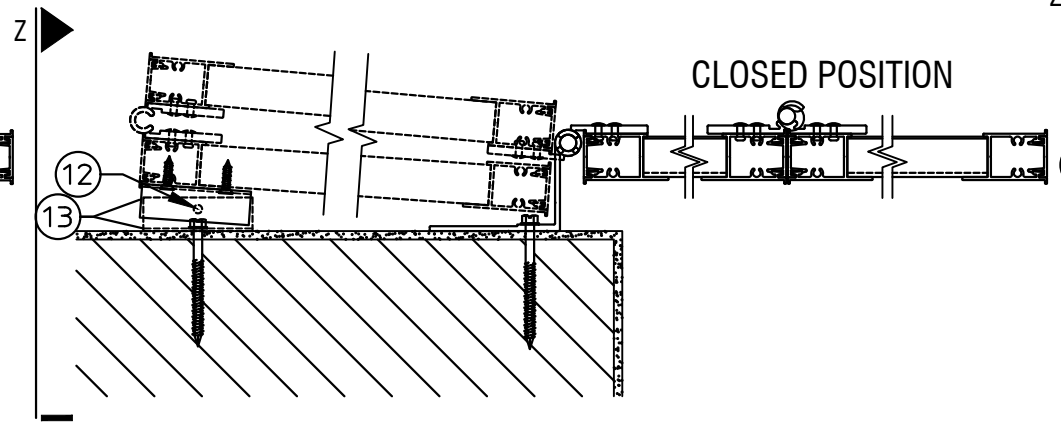
**S** PLAN VIEW 2  
SCALE: 1-1/2" = 1'-0"



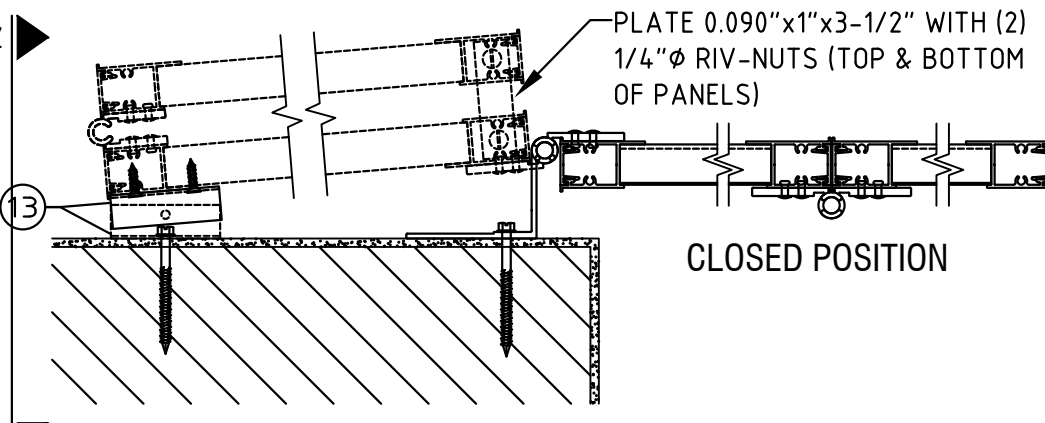
**T** PLAN VIEW 3  
SCALE: 1-1/2" = 1'-0"



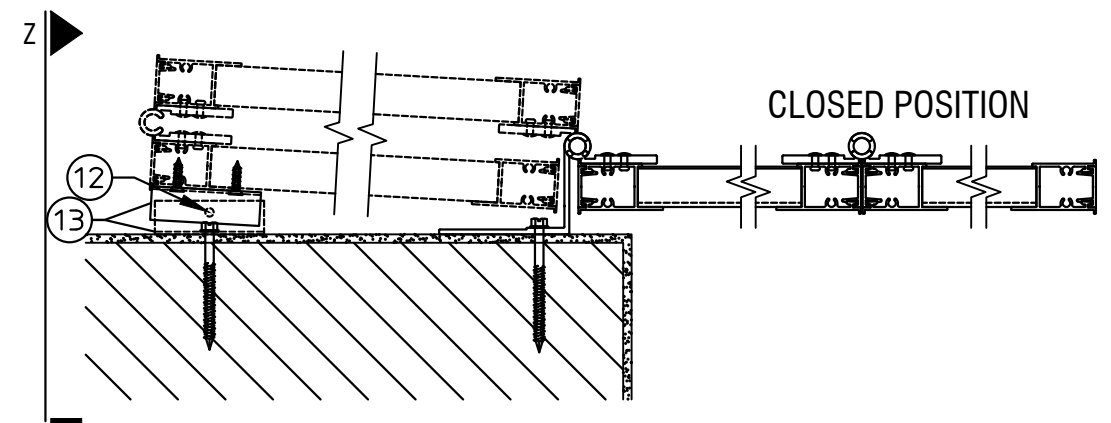
**U** PLAN VIEW 4  
SCALE: 1-1/2" = 1'-0"



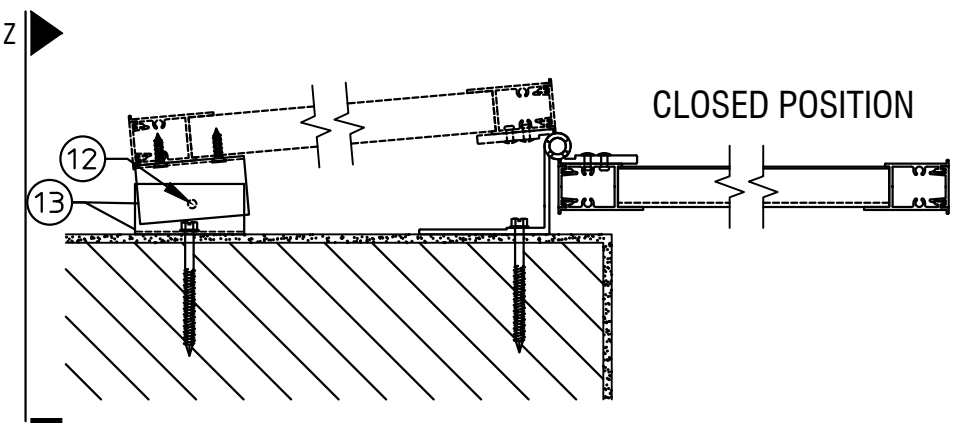
**V** PLAN VIEW 5  
SCALE: 1-1/2" = 1'-0"



**Y** PLAN VIEW 8  
SCALE: 1-1/2" = 1'-0"



**W** PLAN VIEW 7  
SCALE: 1-1/2" = 1'-0"



**X** PLAN VIEW 6  
SCALE: 1-1/2" = 1'-0"

c:\users\matthew\engineering\express\production - documents\projects\23-123-64831 multiple products 2023 fbc update fl 16219\work\2023 fbc\23-64831 - fl16219.2 - dwg.dwg